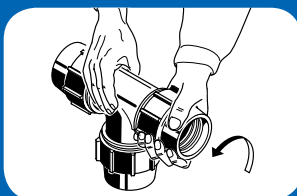


INSTALLATION

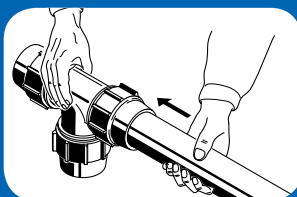
CUT THE PIPE WITH THE SUITABLE PIPE CUTTER CHAMFER AND CLEAN THE PIPE BEFORE THE INSTALLATION

COMPRESSION FITTINGS Ø 16-63 mm

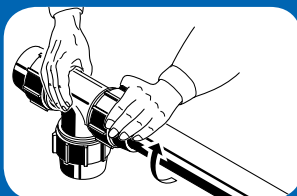
Unscrew the ring nut and the split ring while leaving them on the fitting body.



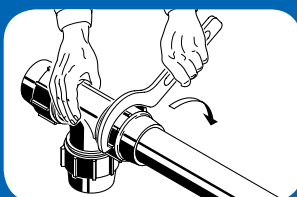
Insert the pipe into the fitting body and the o-ring until it reaches a complete stop.



Screw the ring nut on the fitting body.

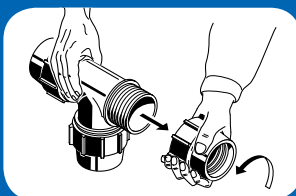


Use a wrench to completely tighten the ring nut.

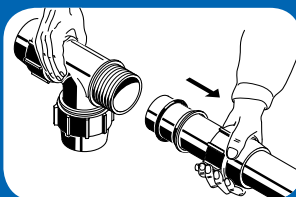


COMPRESSION FITTINGS Ø 75-110 mm

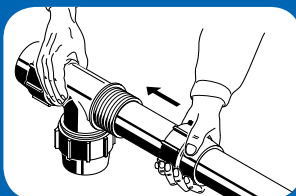
Unscrew the ring nut, the split ring, the thrust ring and the o-ring from the fitting.



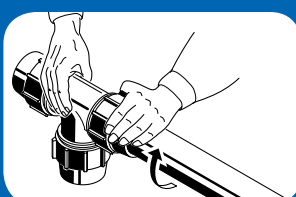
Insert the pipe into the ring nut, the thrust ring and the o-ring.



Lubricate the pipe end and insert it into the fitting body until it reaches a complete stop. Push the o-ring and the thrust ring inside the fitting body.



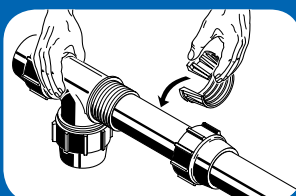
Screw the ring nut on the fitting body.



Unscrew the nut from the fitting body.



Place the split ring on the pipe until it reaches a complete stop.



Use a wrench to completely tighten the nut.

