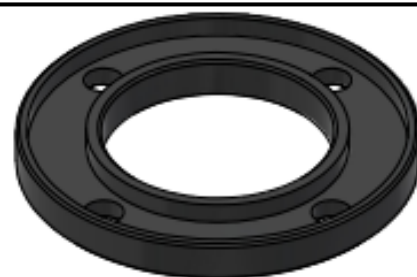


# SUBMITTAL DATA SHEET

NI\_G\_IN\_00161.docx  
Rev. -0 of 29/09/2023



## NIRON CLIMA ACCESSORIES BACKING RING ANSI/ASA 150# FR-PP ECAPSULATED DUCTILE IRON



**ITEM:** 00FLAACPP\_  
**SIZE RANGE:** 1" (32 mm) ÷ 10" (250 mm) and 24" (630 mm)  
**MATERIAL:** FR-PP Encapsulated Ductile Iron  
**COLOR:** Black

### INSTALLATION INSTRUCTIONS:

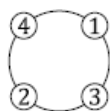
It is recommended to use a torque wrench complying with the ISO 6789 series.

Care must be taken to ensure that the gasket is centered properly between the two flanges before tightening commences.

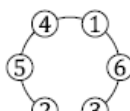
Bolts shall be tightened crosswise in at least six sequences: 5 % / 20 % / 50 % / 75 % /100 % of final torque. Starting with finger tightness, and consequently by using a torque wrench with the same increment of torque up to the final torque required to achieve the correct tightening pressure in the joint.

The torque of the bolts in flange connections is of importance. Therefore, the use of lubricated bolts to minimize external influences is recommended. It is recommended that for diameters above 180 mm, two operators work simultaneously on diametrically opposite bolts if possible.

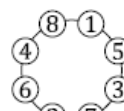
Additional tightening to the recommended torque should be carried out several hours later and also on the next day.



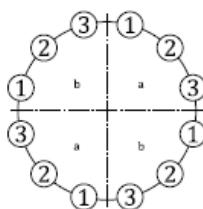
4 Bolts



6 Bolts



8 Bolts



12 Bolts or more

**Key**

- a First Quadrant.  
b Second Quadrant.

### PRODUCT INFORMATION AND APPLICATION USE:

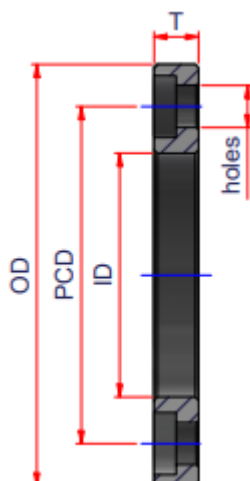
Backing rings are manufactured from a carbon steel inner core and are protected with a galvanized outer layer. The rings are made to match ANSI/ASME 16.5 dimensions and hole patterns.



Nupi Americas, Inc.  
314 Commerce Parkway  
Early Branch, SC 29916  
Phone: 813-398-3579  
Fax: 813-398-3639  
Mail: [info@nupiamericas.com](mailto:info@nupiamericas.com)  
Website: [www.nupiamericas.com](http://www.nupiamericas.com)

# SUBMITTAL DATA SHEET

NI\_G\_IN\_00161.docx  
Rev. -0 of 29/09/2023



| CODE            | Weight<br>lbs/pc | Volume<br>ft <sup>3</sup> /pc | Stub flange             | ANSI 150#<br>HOLE PATTERN | ND (PP)          | OD    | ID    | PCD   | T    | Holes | N°<br>Holes |
|-----------------|------------------|-------------------------------|-------------------------|---------------------------|------------------|-------|-------|-------|------|-------|-------------|
| 00FLAACPP321    | 2.2              | 0.0066                        | 1"                      | 1"                        | 1" => 32 mm      | 4.25  | 1.73  | 3.13  | 0.63 | 0.63  | 4           |
| 00FLAACPP40114  | 2.64             | 0.0077                        | 1 1/4"                  | 1 1/4"                    | 1 1/4" => 40 mm  | 4.61  | 2.05  | 3.5   | 0.63 | 0.63  | 4           |
| 00FLAACPP50112  | 3.3              | 0.0103                        | 1 1/2"                  | 1 1/2"                    | 1 1/2" => 50 mm  | 5     | 2.44  | 3.88  | 0.71 | 0.63  | 4           |
| 00FLAACPP632    | 4.4              | 0.0147                        | 2"                      | 2"                        | 2" => 63 mm      | 5.98  | 3.07  | 4.74  | 0.71 | 0.79  | 4           |
| 00FLAACPP75212  | 5.28             | 0.0202                        | 2 1/2"                  | 2 1/2"                    | 2 1/2" => 75 mm  | 7.01  | 3.62  | 5.49  | 0.71 | 0.79  | 4           |
| 00FLAACPP903    | 5.94             | 0.0259                        | 3"                      | 3"                        | 3" => 90 mm      | 7.52  | 4.33  | 5.98  | 0.79 | 0.79  | 4           |
| 00FLAACPP1104   | 8.36             | 0.037                         | 3 1/2" LS-SF -<br>4" LS | 4"                        | 3 1/2" => 110 mm | 9     | 5.24  | 7.5   | 0.79 | 0.79  | 8           |
| 00FLAACPP1254   | 10.78            | 0.037                         | 4" SF                   | 4"                        | 4" => 125 mm     | 9     | 5.82  | 7.5   | 0.79 | 0.79  | 8           |
| 00FLAACPP1255A5 | 10.93            | 0.0457                        | 4"                      | 5"                        | 4" => 125 mm     | 10    | 5.66  | 8.5   | 0.79 | 0.91  | 8           |
| 00FLAACPP1606   | 14.85            | 0.0712                        | 6"                      | 6"                        | 6" => 160 mm     | 10.98 | 7.01  | 9.49  | 1.02 | 0.91  | 8           |
| 00FLAACPP2008   | 17.6             | 0.1076                        | 8"                      | 8"                        | 8" => 200 mm     | 13.5  | 9.25  | 11.75 | 1.02 | 0.91  | 8           |
| 00FLAACPP25010  | 26.4             | 0.1744                        | 10"                     | 10"                       | 10" => 250 mm    | 15.98 | 11.42 | 14.25 | 1.18 | 1     | 12          |
| 00FLAACPP63024  | 75               | 1.0726                        | 24"                     | 24"                       | 24" => 630 mm    | 32    | 25.08 | 29.5  | 1.81 | 1.37  | 20          |

## MANUFACTURER' S WARRANTY:

Thirty (30) Years from the date of sale upon successful completion of pressure test of the piping system (refer to published warranty for complete details).

## NOTE:

\* More information can be found on NIRON TECHNICAL CATALOGUE

\*\*\* In order for Niron pipe and fittings to meet E-84 and/or CAN/ULC S102.2 for installation in a plenum application, it must be covered with a minimum of 1" or greater E-84 fiberglass insulation

\*\*\*\* Technical Data may undergo dimensional changes, check revision at the top



Nupi Americas, Inc.  
314 Commerce Parkway  
Early Branch, SC 29916  
Phone: 813-398-3579  
Fax: 813-398-3639  
Mail: [info@nupiamericas.com](mailto:info@nupiamericas.com)  
Website: [www.nupiamericas.com](http://www.nupiamericas.com)