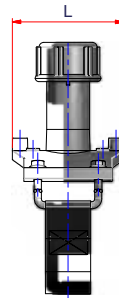
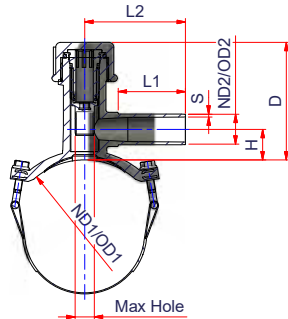


ELECTROFUSION FITTINGS



TAPPING TEE WITH BELT

- ⁽¹⁾Weldable on pipe DR 17 - 1-5.5 - 13.5 - 11 - 9.3 - 9 - 7.3 - 7
- ⁽²⁾Weldable on pipe DR 17 - 15.5 - 13.5 - 11 - 9.3 - 9
- ⁽³⁾Weldable on pipe DR 17 - 15.5 - 13.5 - 11

(*) PF(min DR)= Maximum Drilling Depth
The same fittings is available with metric outlet upon request.

Hexagonal key for perforation (mm)

PE4710 230PSI SDR11 • IPSxIPS IPSxCTS

Code	Nominal Diameter \varnothing (ND1 x ND2)	(*) PF Min DR	Pack.	Q.ty pallet	Weight lb/p.	Volume ft ³ /p.	OD1	OD2	S	H	L1	L2	L	D	Max Hole	
12EIPRES0812C	8" IPS x 1/2" CTS	7 ⁽¹⁾	10	120	3.124	0.2825	8.625	0.625	0.104	1.57	2.17	4.13	5.90	6.30	0.94	10
12EIPRES1012C	10" IPS x 1/2" CTS	9 ⁽²⁾	10	120	3.080	0.2825	10.750	0.625	0.104	1.57	2.17	4.13	5.90	6.30	0.94	10
12EIPRES1212C	12" IPS x 1/2" CTS	11 ⁽³⁾	8	96	3.149	0.3532	12.750	0.625	0.104	1.57	2.17	4.13	5.90	6.30	0.94	10
12EIPRES1212	12" IPS x 1/2" IPS	11 ⁽³⁾	8	96	3.149	0.3532	12.750	0.840	0.076	1.57	2.17	4.13	5.90	6.30	0.94	10
12EIPRES0834	8" IPS x 3/4" IPS	7 ⁽¹⁾	10	120	3.080	0.2825	8.625	1.050	0.095	1.57	2.75	4.13	5.90	6.30	0.94	10
12EIPRES1034	10" IPS x 3/4" IPS	9 ⁽²⁾	10	120	3.091	0.2825	10.750	1.050	0.095	1.57	2.75	4.13	5.90	6.30	0.94	10
12EIPRES1234	12" IPS x 3/4" IPS	11 ⁽³⁾	10	120	3.091	0.2825	12.750	1.050	0.095	1.57	2.75	4.13	5.90	6.30	0.94	10
12EIPRES0801C	8" IPS x 1" CTS	7 ⁽¹⁾	10	120	3.058	0.2825	8.625	1.125	0.101	1.57	2.75	4.13	5.90	6.30	0.94	10
12EIPRES1001C	10" IPS x 1" CTS	9 ⁽²⁾	10	120	3.091	0.2825	10.750	1.125	0.101	1.57	2.75	4.13	5.90	6.30	0.94	10
12EIPRES1201C	12" IPS x 1" CTS	11 ⁽³⁾	10	120	3.014	0.2825	12.750	1.125	0.101	1.57	2.75	4.13	5.90	6.30	0.94	10
12EIPRES0801	8" IPS x 1" IPS	9 ⁽¹⁾	10	120	2.948	0.2825	8.625	1.315	0.188	1.57	2.75	4.13	5.90	6.30	0.94	10
12EIPRES1001	10" IPS x 1" IPS	9 ⁽¹⁾	10	120	2.970	0.2825	10.750	1.315	0.188	1.57	2.75	4.13	5.90	6.30	0.94	10
12EIPRES1201	12" IPS x 1" IPS	11 ⁽³⁾	10	120	3.014	0.2825	12.750	1.315	0.188	1.57	2.75	4.13	5.90	6.30	0.94	10
12EIPRES03114	3" IPS x 1 1/4" IPS	7 ⁽¹⁾	25	300	1.610	0.1130	3.500	1.660	0.151	1.18	2.75	4.13	5.90	4.88	0.87	10
12EIPRES04114	4" IPS x 1 1/4" IPS	7 ⁽¹⁾	25	300	1.641	0.1130	4.500	1.660	0.151	1.18	2.75	4.13	5.90	4.88	0.87	10
12EIPRES06114	6" IPS x 1 1/4" IPS	7 ⁽¹⁾	25	300	1.646	0.1130	6.625	1.660	0.151	1.18	2.75	4.13	5.90	4.88	0.87	10
12EIPRES08114	8" IPS x 1 1/4" IPS	7 ⁽¹⁾	10	120	3.080	0.2825	8.625	1.660	0.151	1.57	2.75	4.13	5.90	6.30	0.94	10
12EIPRES10114	10" IPS x 1 1/4" IPS	9 ⁽²⁾	10	120	3.036	0.2825	10.750	1.660	0.151	1.57	2.75	4.13	5.90	6.30	0.94	10
12EIPRES12114	12" IPS x 1 1/4" IPS	11 ⁽³⁾	10	120	3.058	0.2825	12.750	1.660	0.151	1.57	2.75	4.13	5.90	6.30	0.94	10
12EIPRES0602	6" IPS x 2" IPS	7 ⁽¹⁾	6	120	4.147	0.2825	6.625	2.375	0.216	2.32	3.54	5.28	5.90	8.26	1.58	14
12EIPRES0802	8" IPS x 2" IPS	7 ⁽¹⁾	6	72	4.822	0.4707	8.625	2.375	0.216	2.32	3.54	5.28	5.90	8.26	1.58	14
12EIPRES1002	10" IPS x 2" IPS	9 ⁽²⁾	6	72	4.822	0.4707	10.750	2.375	0.216	2.32	3.54	5.28	5.90	8.26	1.58	14
12EIPRES1202	12" IPS x 2" IPS	11 ⁽³⁾	6	72	4.877	0.4707	12.750	2.375	0.216	2.32	3.54	5.28	5.90	8.26	1.58	14