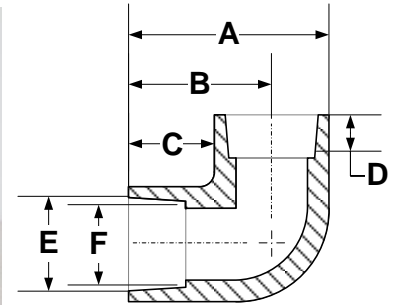


SOCKET FUSION FITTINGS

90° ELBOW

FOR REFERENCE ONLY

(SOCKET) IPS & CTS



2

Nominal Pipe Size	A Length ¹	B Length ¹	C Length ¹	D Socket Length	E Socket Entrance	F Socket Bottom
1/2" CTS	1.875"	1.250"	0.675"	0.625"	.585" ^{+0.010/-0.007}	.575" ^{+0.010/-0.007}
mm	47.63	31.75	17.15	15.88	14.86	14.61
1/2" IPS	1.875"	1.250"	0.675"	0.575"	.810" ^{+0.005/-0.010}	.804" ^{+0.005/-0.026}
mm	47.63	31.75	17.15	14.61	20.57	20.42
3/4" CTS	2.100"	1.400"	0.700"	0.625"	.835" ^{+/-0.010}	.825" ^{+/-0.010}
mm	53.34	35.56	17.78	15.88	21.21	20.96
3/4" IPS	2.100"	1.400"	0.700"	0.625"	1.020" ^{+/-0.008}	1.012" ^{+0.008/-0.012}
mm	53.34	35.56	17.78	15.88	25.91	25.70
1" CTS	2.300"	1.500"	0.600"	0.625"	1.075" ^{+/-0.008}	1.070" ^{+0.008/-0.012}
mm	58.42	38.10	15.24	15.88	27.30	27.18
1" IPS	2.300"	1.500"	0.600"	0.685"	1.275" ^{+/-0.008}	1.267" ^{+0.008/-0.012}
mm	58.42	38.10	15.24	17.40	32.38	32.18
1 1/4" IPS	3.200"	2.000"	0.900"	0.875"	1.620" ^{+/-0.008}	1.612" ^{+0.008/-0.016}
mm	81.28	50.80	22.86	22.23	41.15	40.94
1 1/2" IPS	3.500"	2.200"	0.900"	0.875"	1.860" ^{+/-0.010}	1.849" ^{+0.010/-0.020}
mm	88.90	55.88	22.86	22.23	47.24	46.96
2" IPS	4.200"	2.600"	1.200"	0.875"	2.335" ^{+/-0.010}	2.324" ^{+0.010/-0.020}
mm	106.68	66.04	30.48	22.23	59.31	59.03
3" IPS	5.900"	3.650"	1.500"	1.000"	3.455" ^{+/-0.015}	3.439" ^{+0.015/-0.025}
mm	149.86	92.71	38.10	25.40	87.76	87.35
4" IPS	7.400"	4.875"	2.000"	1.125"	4.450" ^{+/-0.015}	4.434" ^{+0.015/-0.035}
mm	187.96	123.83	50.80	28.58	113.03	112.62

¹ All values are nominal dimensions

² Drawing may not be exact representation of product

Note Please contact a Rahn Customer Sales Rep for availability



Rahn Plastics Incorporated
 54 Ferris Dr, North Bay
 Ontario, Canada, P1A 4M3
www.rahnplastics.com

(Local) 1-705-495-6777
 (Toll Free) 1-888-433-0111
 (Fax) 1-866-495-6820