

BUTT FUSION FITTINGS

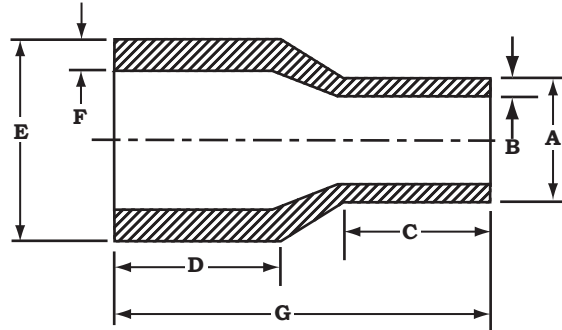
FOR REFERENCE ONLY



Swan Plastics, LLC Phone: (405) 275-4826
 6500 North Kickapoo Fax: (405) 275-3626
 Shawnee, OK 74804, USA

BUTT REDUCERS

(IPS)



NOMINAL SIZE	DIMENSION A	DIMENSION B	DIMENSION C	DIMENSION D	DIMENSION E	DIMENSION F	DIMENSION G
1" IPS x 3/4" IPS	1.050 ±.008	.095 +.019	2.17	2.17	1.315 ±.010	.119 +.024	4.58
1 1/4" IPS x 1" IPS	1.315 ±.010	.119 +.024	2.15	2.20	1.660 ±.010	.151 +.030	4.66
1 1/2" IPS x 3/4" IPS	1.050 ±.008	.095 +.019	2.13	2.44	1.900 ±.010	.173 +.035	5.33
1 1/2" IPS x 1" IPS	1.315 ±.010	.119 +.024	2.16	2.44	1.900 ±.010	.173 +.035	5.12
1 1/2" IPS x 1 1/4" IPS	1.660 ±.010	.151 +.030	2.17	2.44	1.900 ±.010	.173 +.035	4.83
2" IPS x 1" IPS	1.315 ±.010	.119 +.024	2.13	2.53	2.375 ±.010	.216 +.043	5.62
2" IPS x 1 1/4" IPS	1.660 ±.010	.151 +.030	2.15	2.53	2.375 ±.010	.216 +.043	5.34
2" IPS x 1 1/2" IPS	1.900 ±.010	.173 +.035	2.42	2.53	2.375 ±.010	.216 +.043	5.40
3" IPS x 2" IPS	2.375 ±.010	.216 +.043	2.50	2.90	3.500 ±.012	.318 +.064	6.43